

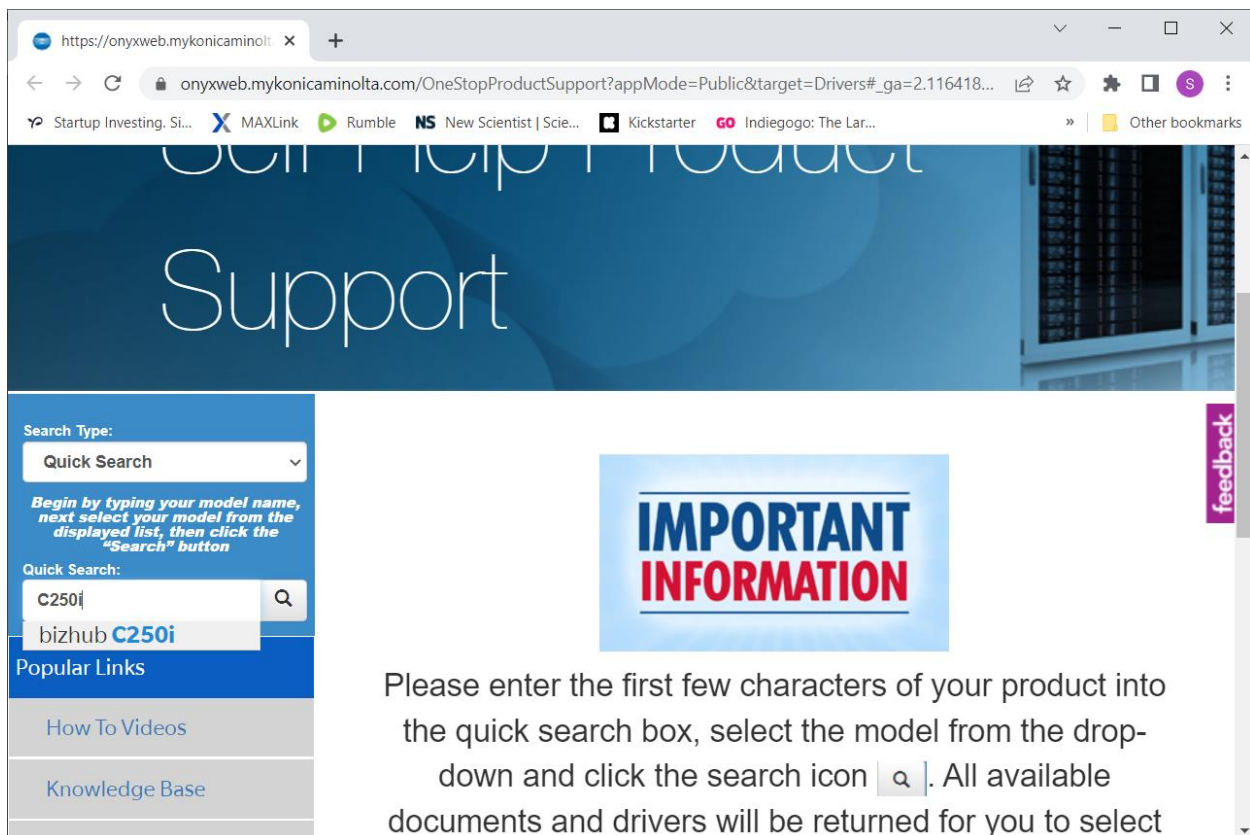
Driver Download Method

You must first download the correct driver for the device you wish to install. For this example, I am using a Konica Minolta Bizhub C550i. Go to Konica Minolta download site.

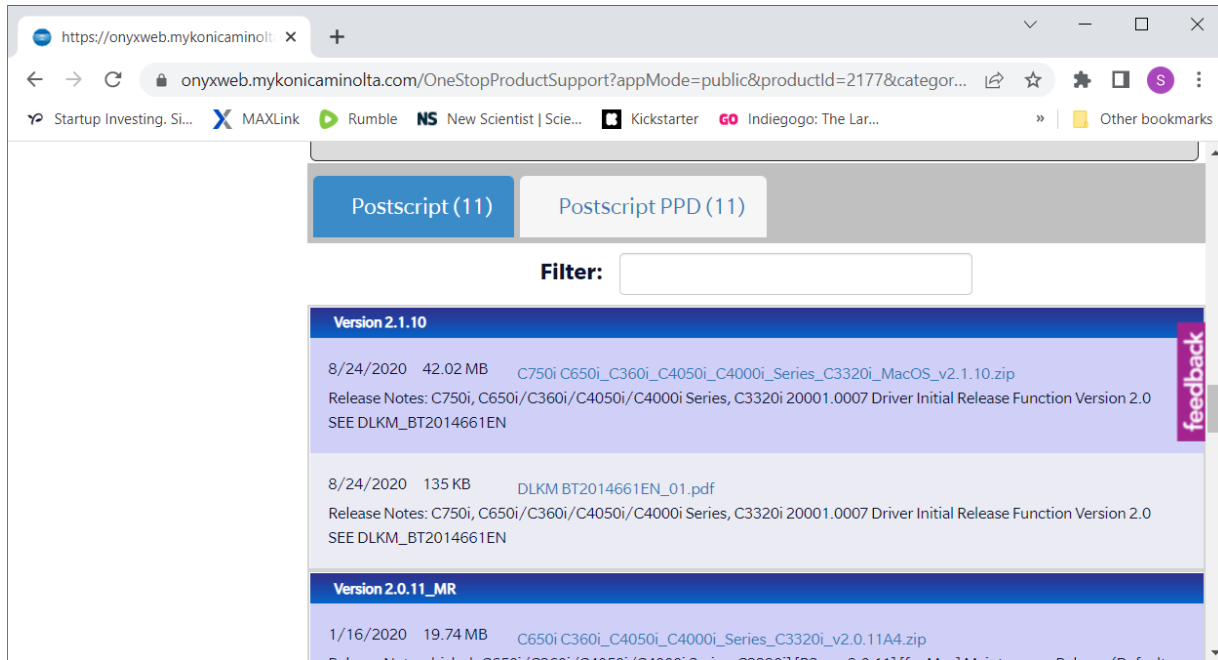
https://onyxweb.mykonicaminolta.com/OneStopProductSupport?appMode=Public&target=Drivers#_ga=2.116418949.268058725.1659984425-1336866953.1613052891

On the left side of the screen type in your model number then select the correct one from the list. "Bizhub C550i".

On the following screen select the "Driver" tab then scroll down and select your iOS version. For this example, I am using 10.13.x.

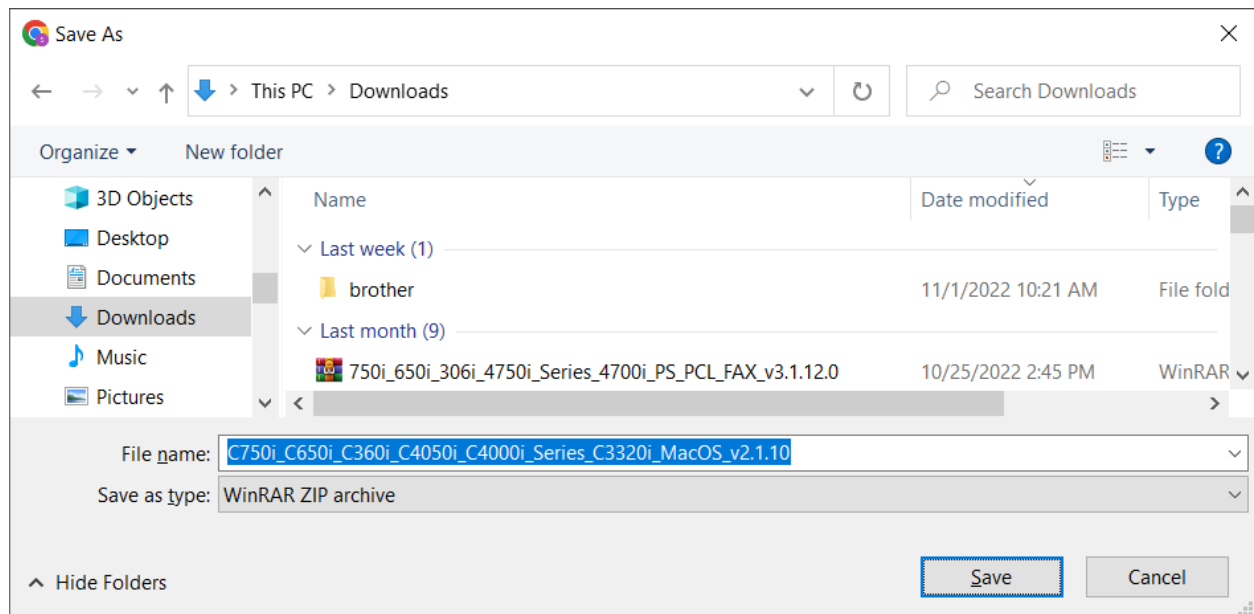


The screenshot shows a web browser window with the URL https://onyxweb.mykonicaminolta.com/OneStopProductSupport?appMode=Public&target=Drivers#_ga=2.116418949.268058725.1659984425-1336866953.1613052891. The page features a blue header with the word "Support" and a navigation menu. A search box is visible with the text "C250i" entered, and a dropdown menu showing "bizhub C250i". A prominent "IMPORTANT INFORMATION" box is displayed, containing the text: "Please enter the first few characters of your product into the quick search box, select the model from the drop-down and click the search icon [q]. All available documents and drivers will be returned for you to select".



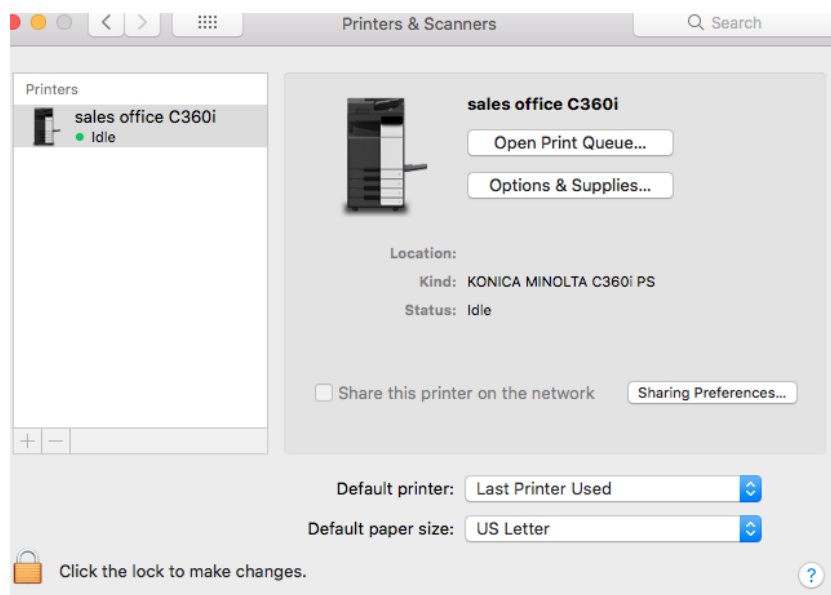
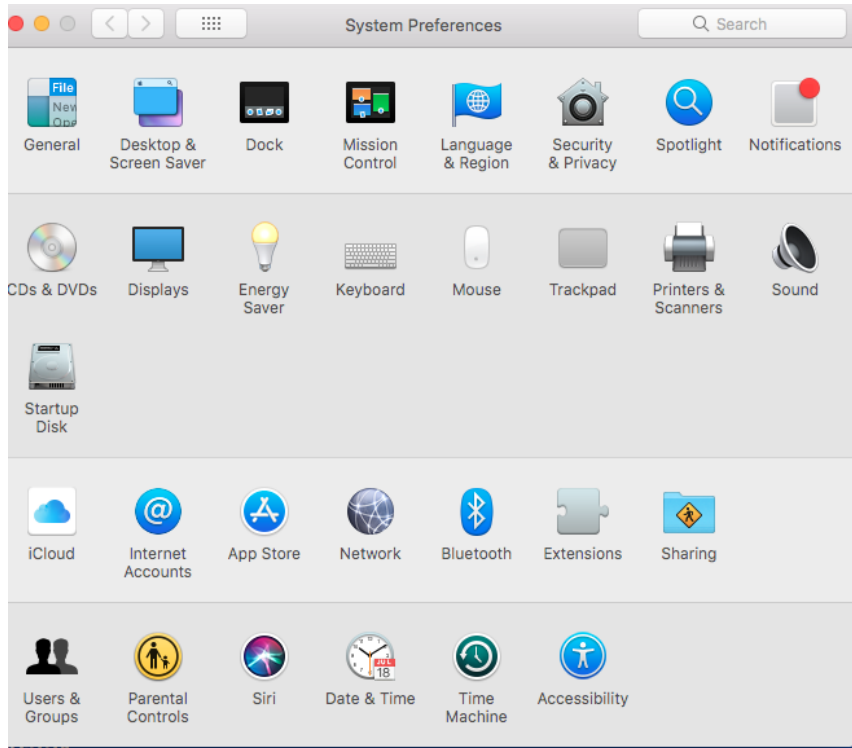
Normally the first zip file on the list is the most current driver.

After the zip file runs extract and run setup.exe

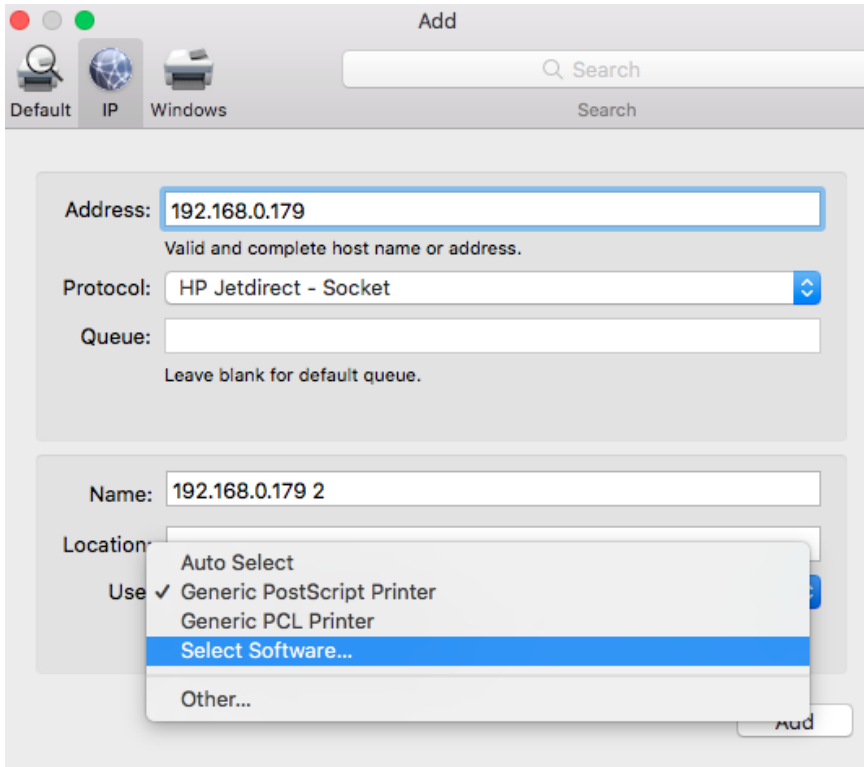


Navigate down the “letter” “not A4” driver folder to the “PKG” package file and run this file. This installs the correct software onto your Mac, you will need admin credentials to run this file.

Next go to System Preferences on your Mac and select “Printers & Scanners”



On the Printers & Scanners device list click on the little “+” button at the bottom on the list.



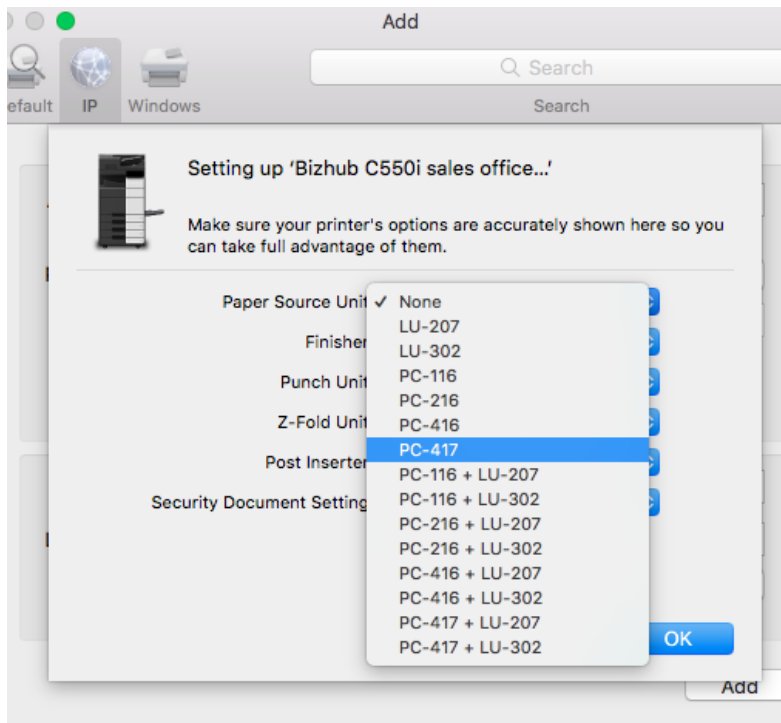
From the top down:

Change the Default to “IP” then enter the Bizhub’s IP address such as “192.168.0.179” This will be different at your location.

Next change the “Protocol” to: HP Jetdirect – Socket.

Don’t forget to rename your driver by editing the printer “Name” by default the iOS fills in the IP address. It is not required to change this but is very helpful if you

have multiple printers.



Next select our Bizhub’s optional features. See your purchase information or ask your sales rep for this info.

When finished select OK and then you should test print a couple documents.